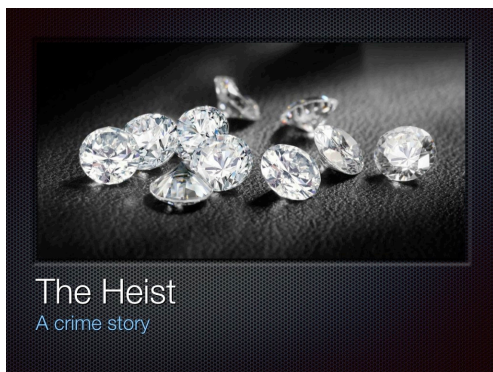


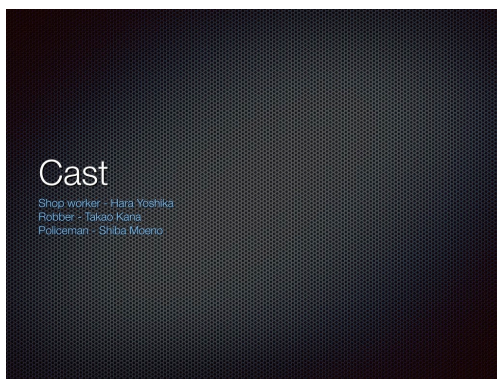
Appendix A - PowerPoint example - *The Heist* (narrated by MC)



SLIDE 1 - Title slide.

(Narration)

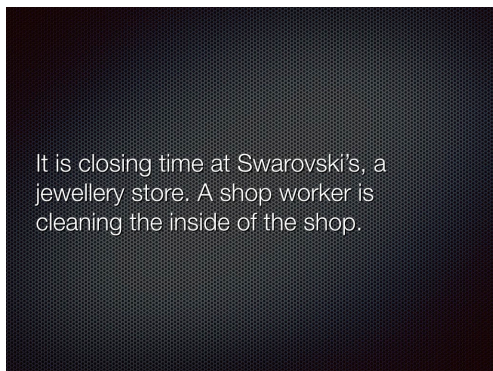
“The Heist, a crime story written and performed by (names).”



SLIDE 2 - Cast list.

(Narration)

“_____ plays the thief,
_____ plays the policeman,
_____ plays the shop worker.”



SLIDE 3 - Lead-in slide.

Contains introductory sentences the group wrote when preparing the script.

(Narration)

“It is closing time at Swarovski's, a jewellery store in Manhattan. A shop worker is cleaning the inside of the shop.”



Subsequent slides contain a picture that forms the backdrop for the appropriate scene.

Appendix B - Storyboard

Play title: _____

Instructions: Use this storyboard to plan your performance. In the boxes, draw a simple sketch of each scene. Below the box, briefly describe the location of each scene, the characters that appear in each scene, and the action that takes place.

A large, empty rectangular box with rounded corners and a thin grey border, intended for drawing a scene sketch.

Scene:

Characters:

Action:

A large, empty rectangular box with rounded corners and a thin grey border, intended for drawing a scene sketch.

Scene:

Characters:

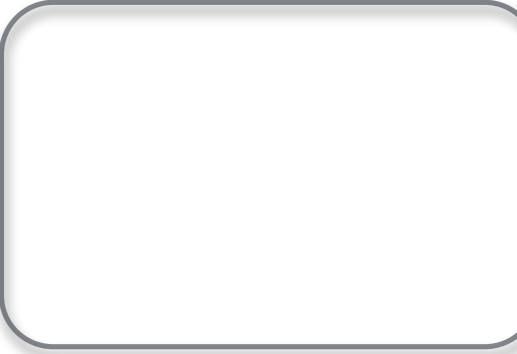
Action:

A large, empty rectangular box with rounded corners and a thin grey border, intended for drawing a scene sketch.

Scene:

Characters:

Action:

A large, empty rectangular box with rounded corners and a thin grey border, intended for drawing a scene sketch.

Scene:

Characters:

Action:

A large, empty rectangular box with rounded corners and a thin grey border, intended for drawing a scene sketch.

Scene:

Characters:

Action:

A large, empty rectangular box with rounded corners and a thin grey border, intended for drawing a scene sketch.

Scene:

Characters:

Action:

A large, empty rectangular box with rounded corners and a thin grey border, intended for drawing a scene sketch.

Scene:

Characters:

Action:

A large, empty rectangular box with rounded corners and a thin grey border, intended for drawing a scene sketch.

Scene:

Characters:

Action:

Appendix C - Performance assessment protocol

Instructions: After watching each of the performances, please give a rating for each of the 8 separate categories (A - G) on a scale of 1 - 5. See notes below for an explanation of what you should look for.

Score guide: 5 = Excellent 4 = Good 3 = Average 2 = Below average 1 = Poor

Category notes

- A. *Originality*: Did the group use their own ideas in the script? Was the story predictable or did it have an unexpected end?
- B. *Logic*: Was the story easy to follow? Did you understand all the characters?
- C. *Structure*: Did it have a clear beginning, main body, and end?
- D. *Voice projection*: Did the cast members speak loudly and clearly? Could you hear/understand them easily?
- E. *Dynamism*: Did the cast members move around and use any gesticulation to communicate?
- F. *Timing*: Did the performance progress smoothly without any unplanned pauses?
- G. *Clarity*: Were the images/sound clear?
- H. *Appropriateness*: Were the images and sounds a good match for the script?

PLAY TITLE	SCRIPT スクリプト A. ORIGINALITY 独創 B. LOGIC 論理, 明瞭 C. STRUCTURE	PERFORMANCE 演技 D) VOICE PROJECTION E) DYNAMISM ダイナミズム F) TIMING タイミング	AUDIO/VISUAL ビジュアル/オーディオ F) CLARITY 鮮明, さ明瞭 G) APPROPRIATENESS ふさわしい	TOTAL /40
	A. /5 B. /5 C. /5	A. /5 B. /5 C. /5	A. /5 B. /5	

PLAY TITLE	SCRIPT スクリプト	PERFORMANCE 演技	AUDIO/VISUAL ビジュアル/オーディオ	TOTAL /40
	A. ORIGINALITY 独創 B. LOGIC 論理 明瞭 C. STRUCTURE	D) VOICE PROJECTION E) DYNAMISM ダイナミズム F) TIMING タイミング	F) CLARITY 鮮明 さ明瞭 G) APPROPRIATENESS ふさわしい	
	A. /5 B. /5 C. /5	A. /5 B. /5 C. /5	A. /5 B. /5	
	A. /5 B. /5 C. /5	A. /5 B. /5 C. /5	A. /5 B. /5	
	A. /5 B. /5 C. /5	A. /5 B. /5 C. /5	A. /5 B. /5	

PLAY TITLE	SCRIPT スクリプト	PERFORMANCE 演技	AUDIO/VISUAL ビジュアル/オーディオ	TOTAL
	A. ORIGINALITY 独創 B. LOGIC 論理 明瞭 C. STRUCTURE	D) VOICE PROJECTION E) DYNAMISM ダイナミズム F) TIMING タイミング	F) CLARITY 鮮明 さ明瞭 G) APPROPRIATENESS ふさわしい	/40
	A. /5 B. /5 C. /5	A. /5 B. /5 C. /5	A. /5 B. /5	